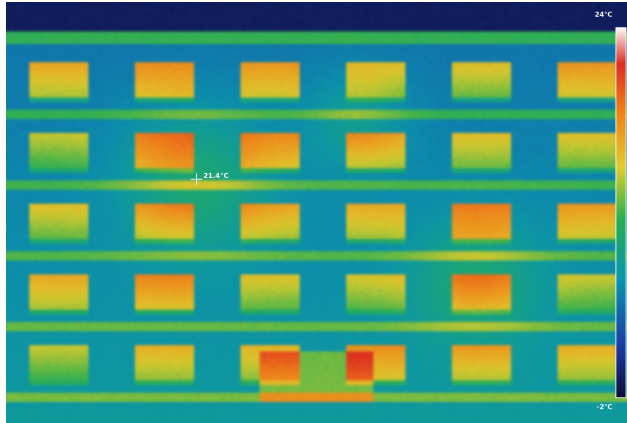


Building Thermal Imaging & Envelope Inspection Services

An independent reference for assessing building envelope performance to international standards



Infrared thermography reveals heat loss, air leakage and moisture in the building envelope, surveyed under controlled conditions to international standards

The energy efficiency, durability and comfort of a building depend on the integrity of its envelope: the walls, roof, glazing and junctions that separate conditioned space from outdoors. Infrared thermography is the most effective non-destructive way to reveal where that envelope underperforms, capturing in one survey what would otherwise stay hidden behind the finishes.

▪ What thermal imaging reveals

A systematic infrared survey detects, without any intrusion:

- Missing, displaced or degraded insulation
- Thermal bridging at slabs, lintels and junctions
- Air leakage and uncontrolled infiltration paths
- Moisture ingress and trapped damp
- Heat loss through glazing and frames
- Overheating in embedded building services

▪ Why an envelope survey matters

Reliable thermographic assessment gives building owners the evidence to:

- Reduce heating and cooling energy costs
- Improve comfort and eliminate cold spots
- Target repairs precisely, not by guesswork
- Prevent mould, condensation and damage
- Verify insulation and workmanship before handover
- Support energy-efficiency objectives

A single infrared survey turns hidden envelope defects into a clear, actionable picture, before they become costly damage



WEBSITE

www.mizanlab.com
info@mizanlab.com



ADDRESS

Al Hamraa Street, C19, Building 5



PHONE

+963 11 3337421
+963 11 3323508

Scope of Services

Building thermographic surveys carried out by Mizan follow the procedures of ISO 6781 and EN 13187, supported by the relevant ASTM practices, so that results are accurate, repeatable and defensible.

- **Building envelope survey**
 - Exterior facade and roof thermographic scanning
 - Interior wall, ceiling and floor inspection
 - Window, door and curtain-wall assessment
 - Detection of thermal bridges and insulation gaps
- **Air leakage & moisture assessment**
 - Air-infiltration mapping, with blower-door testing to ISO 9972
 - Location of wet or saturated insulation in roof systems
 - Detection of condensation and damp-prone zones
 - In-situ thermal transmittance (U-value) checks to ISO 9869
- **Applications**
 - Residential and commercial buildings
 - Hospitals, schools and public facilities
 - Hotels and large mixed-use developments
 - New-build handover and post-construction verification
 - Energy audits and retrofit planning

Technical Reports to ISO & ASTM Standards

In preparing thermographic reports, Mizan applies a documentation and analysis methodology aligned with ISO 6781, EN 13187 and the relevant ASTM practices, ensuring results that are clear, traceable and dependable for decision-making.

The technical reports issued by Mizan include the following:

- Calibrated infrared thermograms paired with reference visual images for every recorded anomaly
- Qualitative detection of thermal irregularities in the building envelope to ISO 6781 and EN 13187
- Identification of missing or inadequate insulation to ASTM C1060, and of wet roof insulation to ASTM C1153
- Air-leakage site detection to ASTM E1186, with optional U-value verification to ISO 9869
- The location, likely cause and potential impact of every non-conformity recorded during the survey
- Clear, prioritised recommendations for remediation, sealing and insulation upgrades



Infrared inspection pinpoints air leakage and thermal bridging around openings

Sound building performance begins with a precise thermal survey



WEBSITE

www.mizanlab.com
info@mizanlab.com



ADDRESS

Al Hamraa Street, C19, Building 5



PHONE

+963 11 3337421
+963 11 3323508